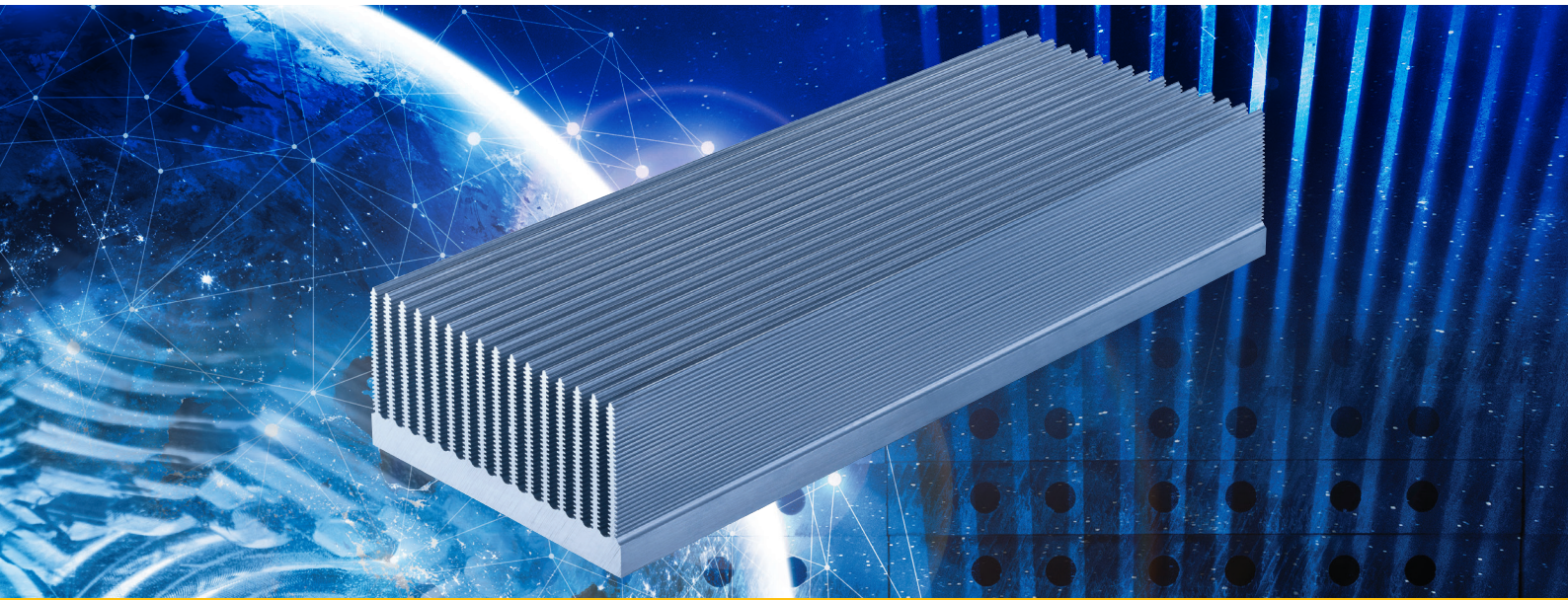


AIR COOLING

High fin density extrusion



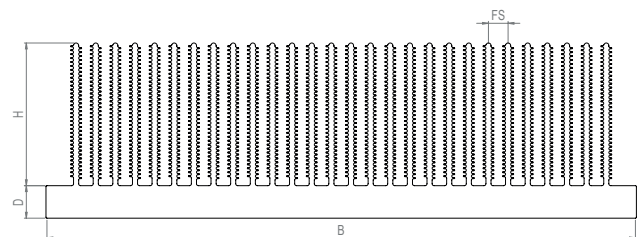
Application

Customized extruded Heat Sink for efficient air cooling of IGBTs and resistors. Miba offers high performance customized solutions for all IGBT and resistor types available on the market.

General Characteristics

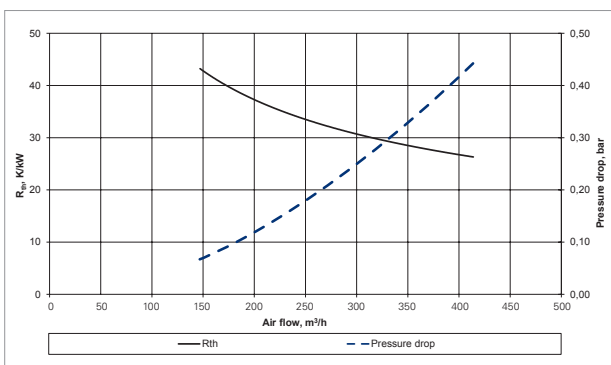
The high fin density extrusion series is produced in an aluminum extrusion process. By welding of several base units it is possible to produce heat sinks up to 1200 mm in width.

Drawing



Type	Width B mm	Base D mm	Fin Height H mm	Number of Fins	Fin Spacing FS mm
145	145	17	72	14	10
205	205	17	72	20	10
235	235	17	72	22	10
245	245	17	72	24	10
265	265	17	72	26	10
300	300	17	72	28	10
565	565	17	72	56	10

Type 205 - length: 400mm



Description

No. of modules: 4
 Module size: 105x70 [mm]
 Power dissipation: 300 [W/modul]
 Thermocouple: Type K
 Air inlet temperature: 25[°C]

