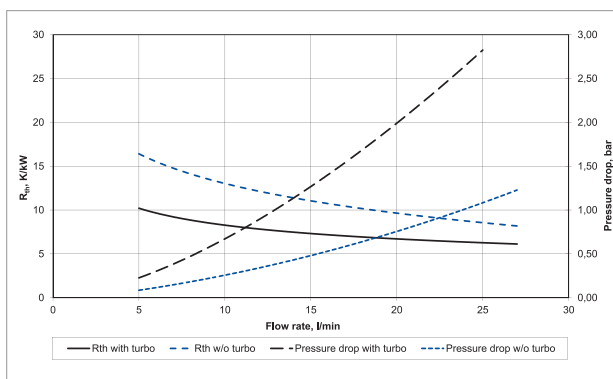


Application

Miba has developed Series-KW a liquid cold plate for high power IGBT and resistor applications. Miba offers high performance customized solutions for all IGBT and resistor types available on the market.

General Characteristics

The desired length and number of mounted IGBT and resistor units is customer specific. To further increase thermal cooling performance of the Miba KW Series, Miba has developed a special flow accelerator called turbulator which increase the coolant velocity in the channels with only minimal increase in system back pressure. Miba recommend the use of turbulators generally and especially with glycol mixtures. The position of the water channels are designed to mount nearly all available semiconductors on the market.

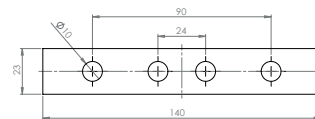


Description

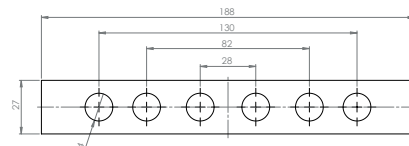
- No. of modules: 1
- Module size: 130x140 [mm]
- Power dissipation: 1000 [W/modul]
- Thermocouple: Type K
- Fluid type: H₂O
- Fluid inlet temperature: 50 [°C]

Drawings

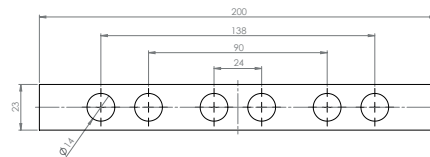
Series KW 140



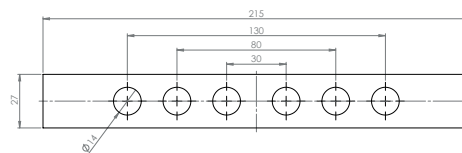
Series KW 188

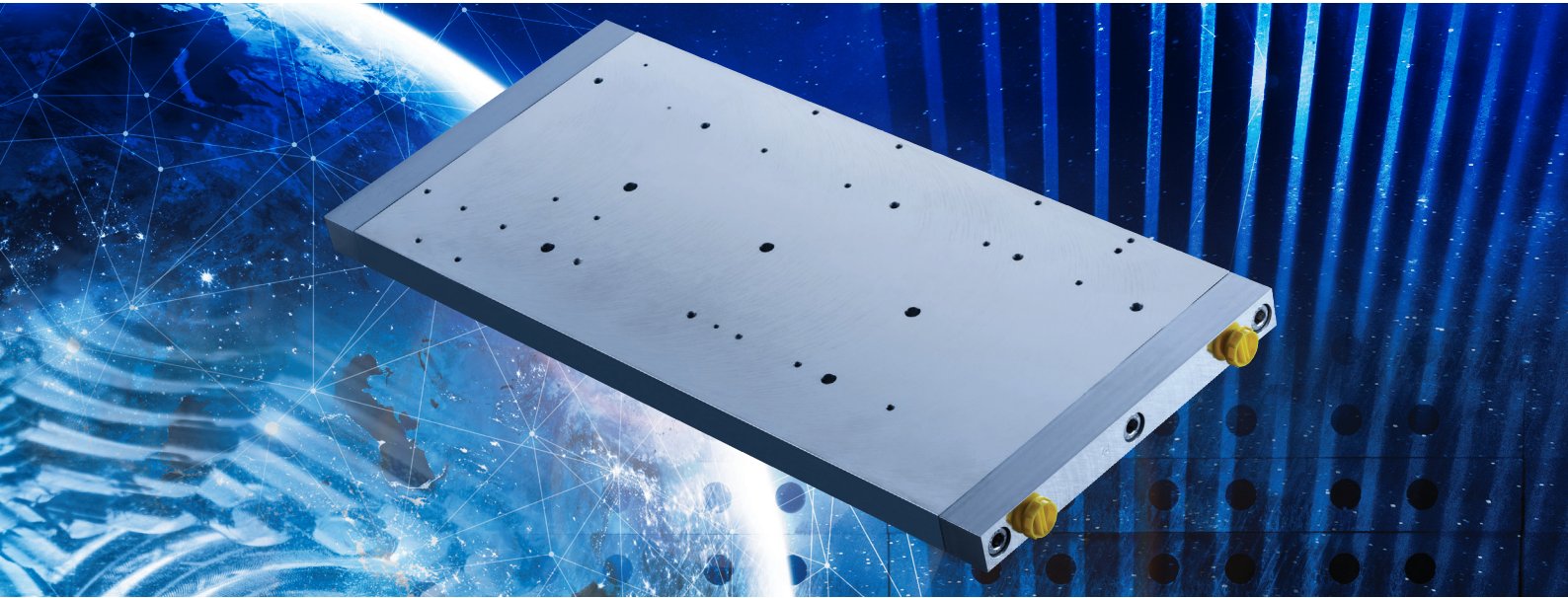


Series KW 200



Series KW 215





Type-Overview

